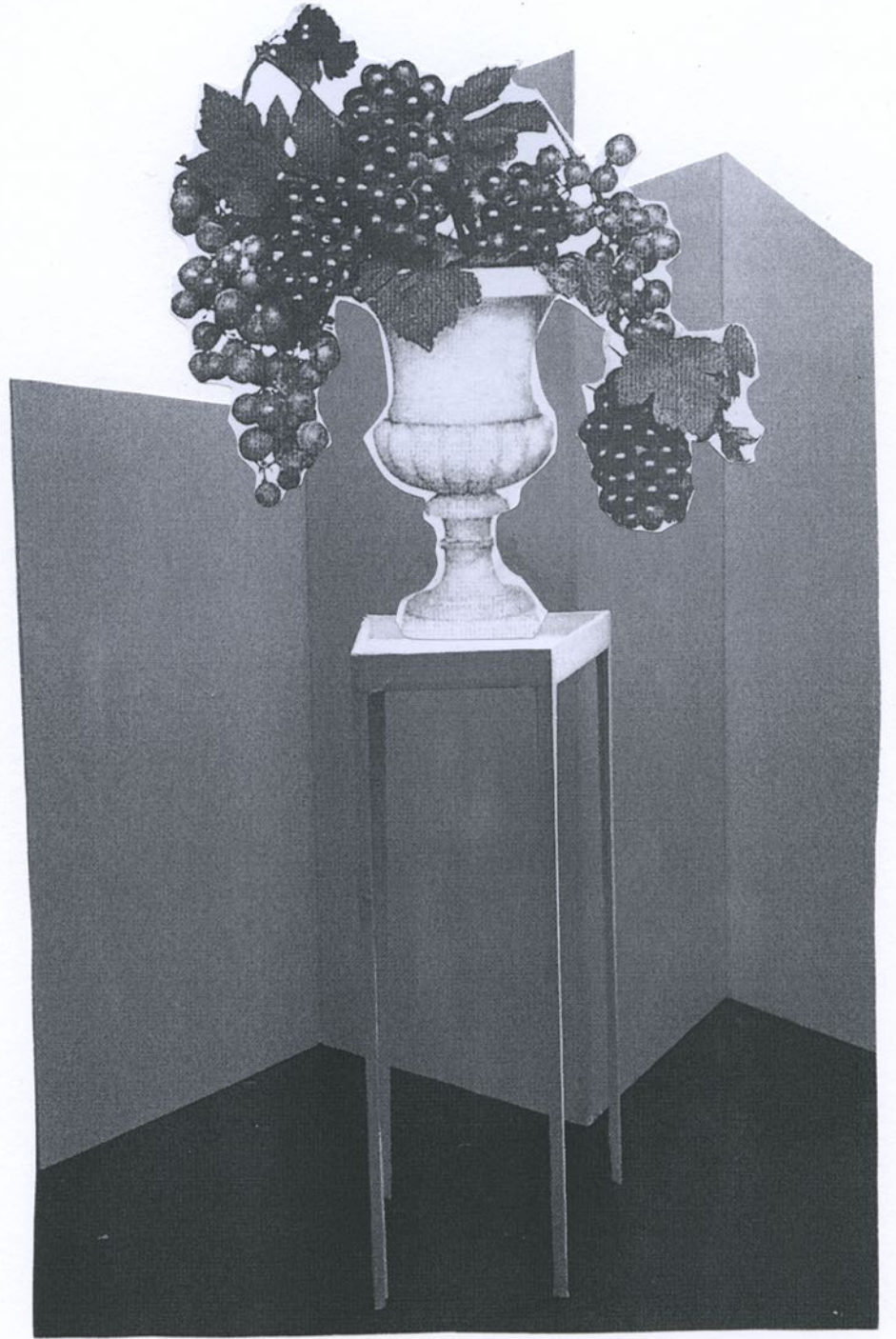
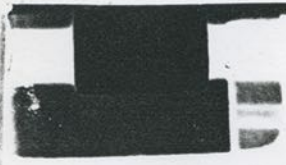


**TOUGH  
STUFF**

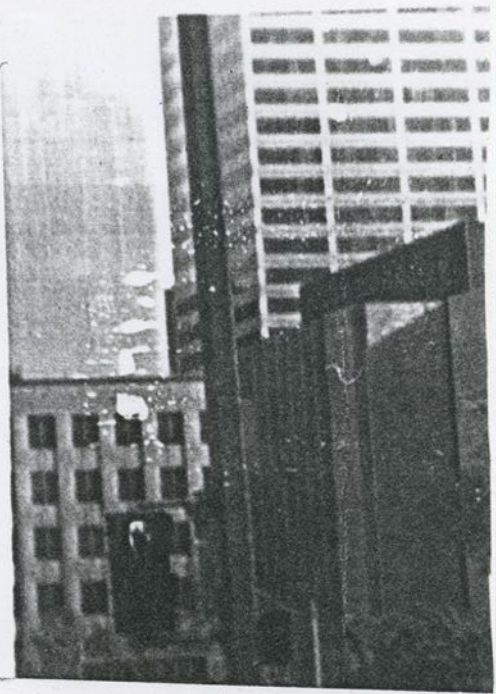






19

19



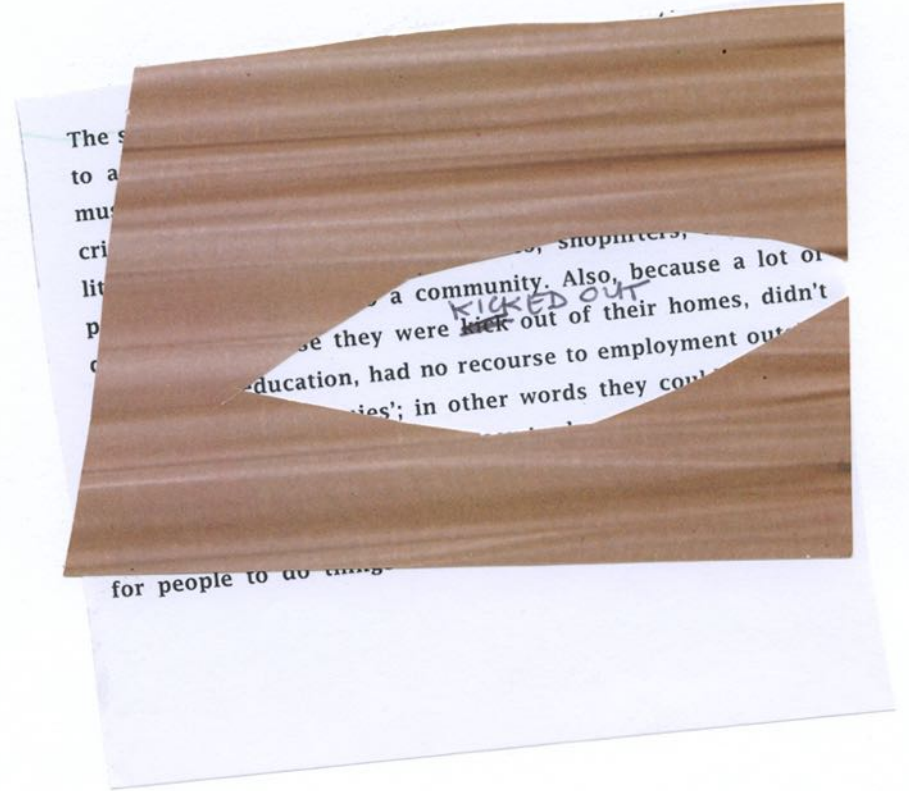
19

19



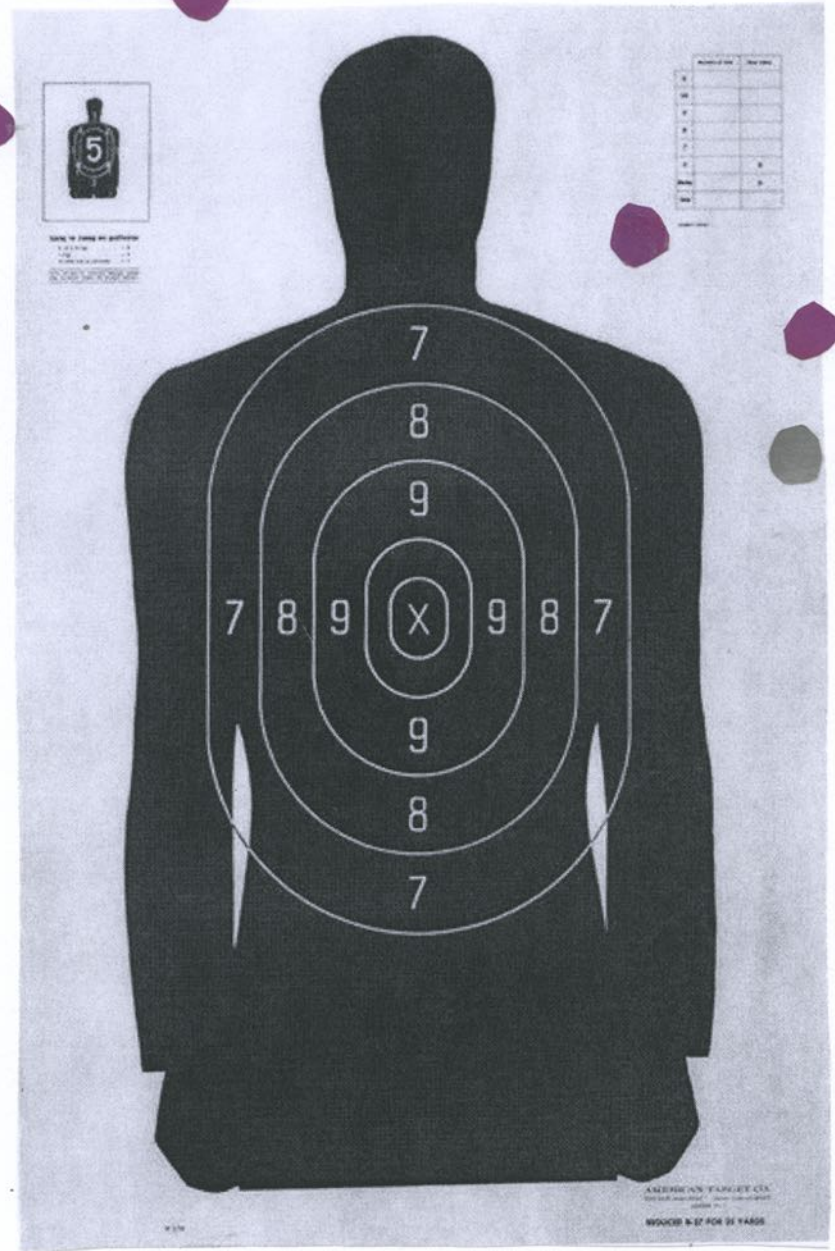


We are badly equipped for our present moment. Paradoxically we were stronger, less vulnerable, with one foot in the closet; we had our wits about us. When the AIDS crisis rocked the gay





In our collages, as in our respective drawings, the subjects are often chosen as symbols of manipulation, within a world of manipulation; from the articulation of a young person's body



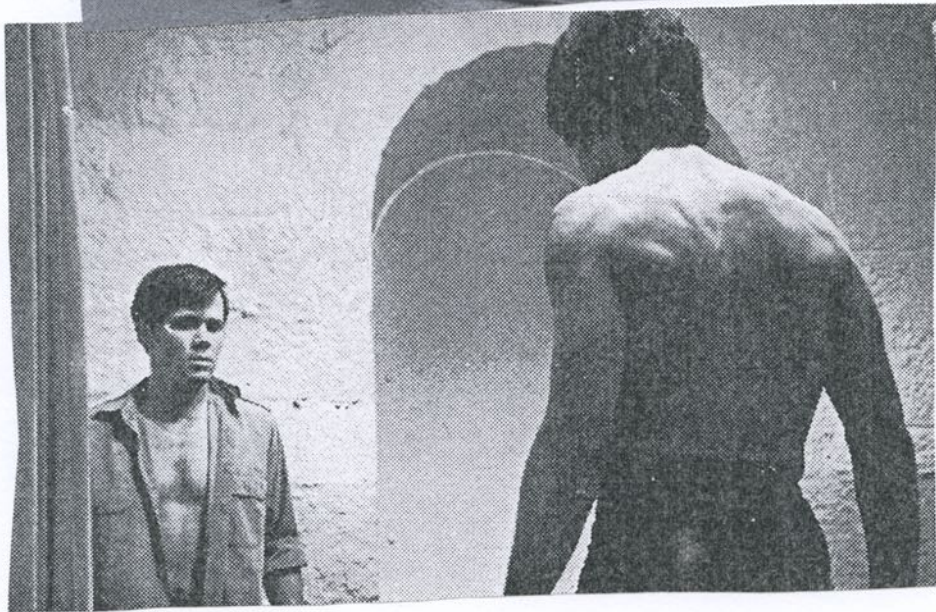
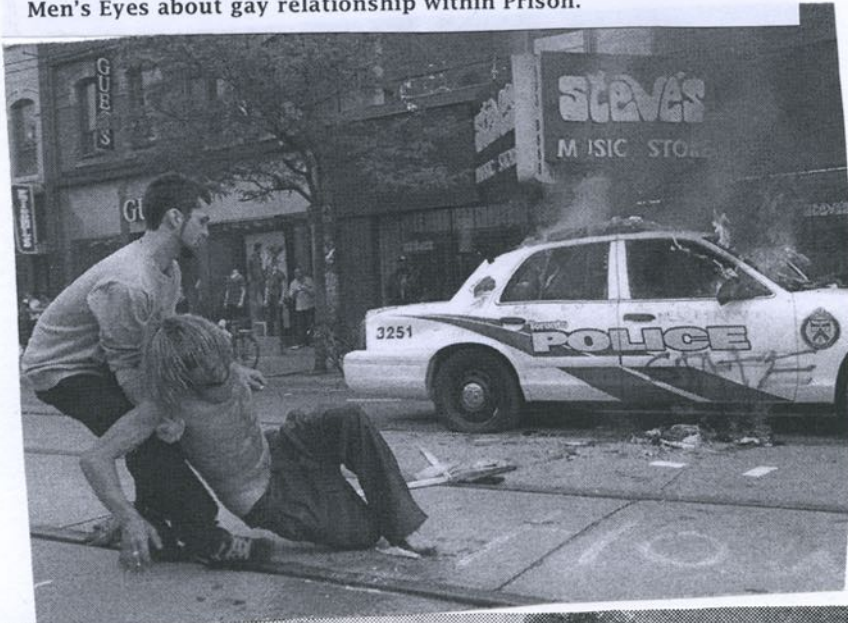
AMERICAN TARGET CO.  
WOODS & EP FOR 31 YEARS



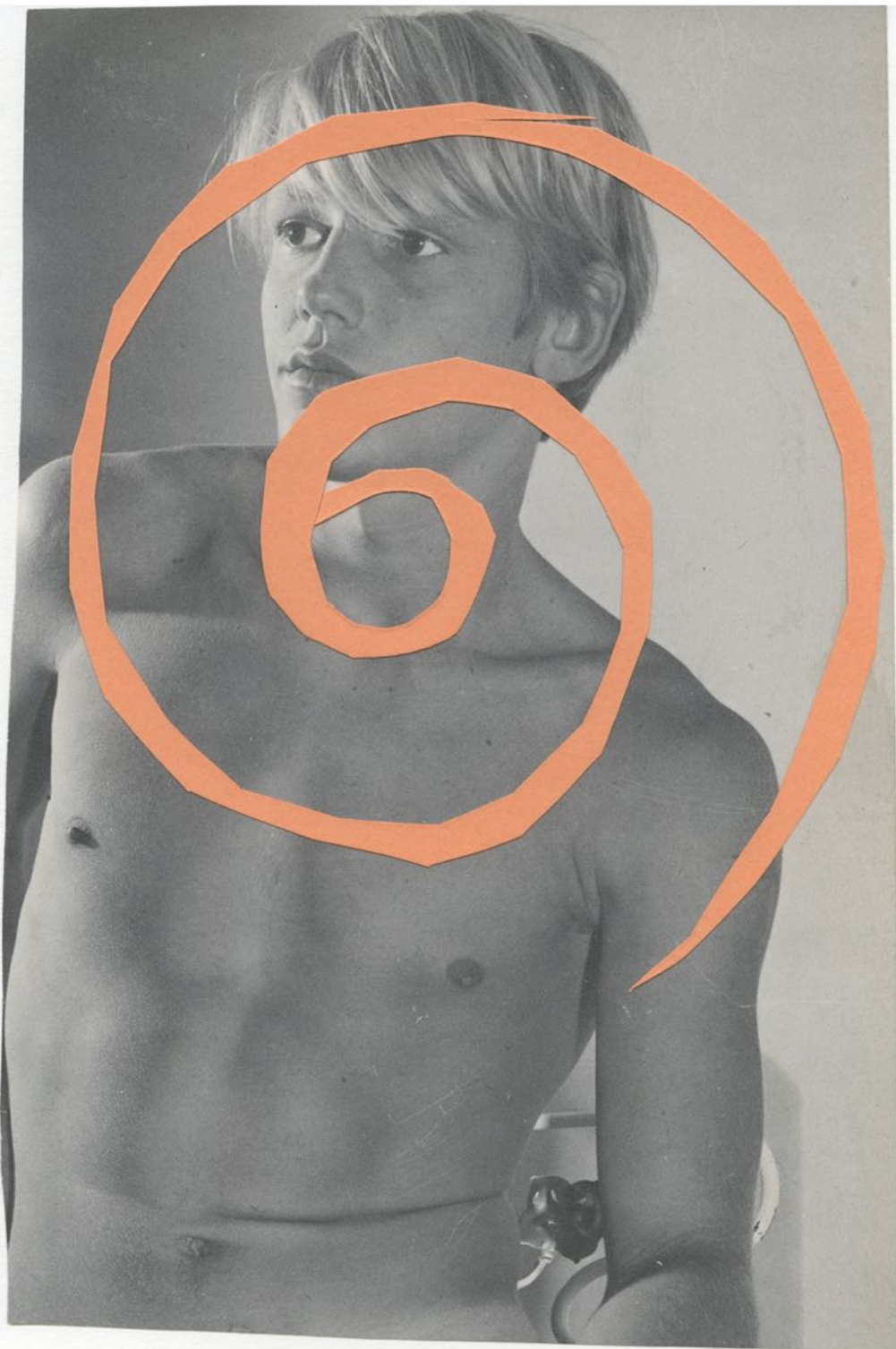


... stake now. We are interested in ungovernable sexualities and genders.

Protests: G20 protests in 2010 that turned to riots in Toronto; bathhouse raids in Toronto in the 1980's which set up something in the psyche of Toronto queers that the police were everlasting enemies; a Canadian play turned film Fortune and Men's Eyes about gay relationship within Prison.

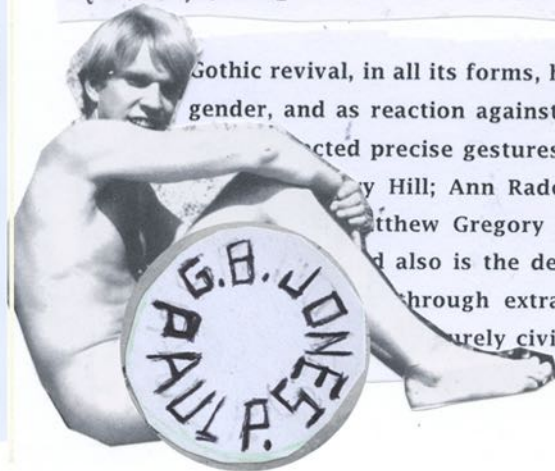








## NATALIE BARNEY'S TEMPLE OF FRIENDSHIP<sup>101</sup>



Gothic revival, in all its forms, held an ambiguous sensibility for gender, and as reaction against the patriarchal culture through selected precise gestures of taste. Horace Wolpole whose *Castle of Otranto*; Ann Radcliff; Mary Shelley; the Monk: A Matthew Gregory Lewis features a character that is also the devil. These proponents of Gothic literature were through extravagance and obsession, but in a purely civil style, rather than a state style;



G.B. Jones and Paul P., printed in an edition of 200  
on the occasion of Temple of Friendship, 2020 [coopercolegallery.com](http://coopercolegallery.com)